

MELGES 24



## INTERNATIONAL MELGES 24

## 2009 WORLD CHAMPIONSHIP

October 23 - November 1, 2009

Eastport Yacht Club

Annapolis, Maryland, USA

## NOTICE OF RACE

The International Melges 24 World Championship will be organized by the Eastport Yacht Club, in co-operation with The United States Melges 24 Class Association and the International Melges 24 Class Association.





## 1. RULES

- 1.1. The regatta will be governed by The Rules as defined in The Racing Rules of Sailing.
- 1.2. The US SAILING prescriptions to rules 40, 61.4, 68, 76.1, 88.2 and added rules 76.3, 82 will apply and are stated in paragraph 24.
- 1.3. The Equipment Rules of Sailing will apply.
- 1.4. If there is a conflict between languages the English text will take precedence.

## 2. ADVERTISING

- 2.1. Advertising will conform to the current ISAF Regulation 20 and the Class Rules.
- 2.2. Boats may be required to display identification (bow) numbers and sponsors advertising for the duration of the event in accordance with ISAF regulation 20.4. These items will be supplied free of charge by the Organizing Authority (OA) at registration.

## 3. ELIGIBILITY AND ENTRY

- 3.1. The Championship is open to all boats of the Melges 24 class that meet with the obligations of the Class Rules and their National Authority, in the case that a National Authority exists.
- 3.2. Eligible boats may enter by completing the entry form online at the website identified in paragraph 23.1, together with the required fee, by September 23, 2009.
- 3.3. No entries will be accepted after October 9, 2009.
- 3.4. Late entries will be accepted subject to a 30% surcharge.
- 3.5. The Organizing Authority will acknowledge complete entries upon receipt via email and post on the official event web site identified in paragraph 23.1.

## 4. CLASSIFICATION

- 4.1. The ISAF Sailor Classification Code will apply to teams in the Corinthian Trophy. Please refer to ISAF's Web site: [www.sailing.org](http://www.sailing.org)
- 4.2. Classification for each sailor must be indicated on the entry form if entering for the Corinthian Trophy and the unique ISAF ID.
- 4.3. The closing date for the registration of Corinthian entries shall be as in 3.3.
- 4.4. Sailors must be registered with ISAF prior to the date identified in 4.3 and be able to declare their User ID number on the entry form.
- 4.5. Classification will be checked at registration. A final list will be published at the close of registration.
- 4.6. Protests regarding ISAF classifications must be submitted by the end of the protest time limit on the first day of racing of the World championship.
- 4.7. Full details for the Corinthian Trophy can be found in IMCA Championship rules.

## 5. FEES

- 5.1. The Entry Fee will be \$950. This Entry Fee includes launching at commencement and recovery at conclusion of the Regatta at designated times, berthing for the event, trailer storage and tickets to the principal events for 4 crew. Additional tickets will be available for purchase.
- 5.2. Entry fees must be made by credit card payment which will be accepted by completing details on the web Entry Form, entries will not be valid until payment is confirmed.





## 6. QUALIFYING SERIES AND FINAL SERIES

- 6.1. If there are more than 100 boats registered then the race committee may decide to divide the contestants into 2 fleets with a qualifying and final series.
- 6.2. If a Qualifying Series and Final Series are held, the following will apply:
  - 6.2.1. Maximum of 3 races a day may be sailed with a maximum of 12 races for the regatta.
  - 6.2.2. The regatta will consist of a qualifying series of a maximum of 6 races followed by a final series of a maximum of 6 races.
  - 6.2.3. For the qualifying series, the Race Committee will divide the competitors into four groups of as nearly equal size as possible, which will sail in alternating combinations.
  - 6.2.4. Based on the results of the qualifying series, the fleet will be divided into a Gold Fleet and a Silver Fleet for the finals.
  - 6.2.5. Competitors will be informed in which group they will sail their qualifying series by the close of registration.

## 7. SCHEDULE

- 7.1. Registration, crew weighing, boat measurement and sail registration will be as follows:

Friday, October 23	1000 – 1700
Saturday, October 24	1000 – 1700
Sunday, October 25	1000 – 1700

- 7.2. Pre-Event Racing Schedule

Saturday, October 24	
Pre-Worlds	1030 warning
Sunday, October 25	
Pre-Worlds	1030 warning

- 7.3. World Championship Racing Schedule

Monday, October 26  
Tuesday, October 27  
Wednesday, October 28  
Thursday, October 29  
Friday, October 30  
Saturday, October 31

- 7.4. The scheduled time of the warning signal for the first race each day is 1030 hours.
- 7.5. Sunday, October 25, there will be a competitors meeting at 1800.
- 7.6. Social Schedule
  - Sunday, October 25
  - Opening Ceremony 1800
  - Friday, October 30
  - Regatta Banquet 1800
  - Saturday, November 1
  - Awards Ceremony TBD
  - Additional events will be added.
- 7.7. The OA and/or the RC reserve the right to modify the program due to weather conditions or other causes.

## 8. MEASUREMENTS

- 8.1. Each boat shall produce a valid measurement certificate before the close of registration as specified in 7.1.
- 8.2. The Organizers may weigh, measure or inspect any boat and or her equipment and sails before, during or after the races.
- 8.3. Registration of sails and limitation stamping will take place during periods stated in 7.1 above. **THERE WILL BE NO FACILITIES FOR INITIAL MEASUREMENT.** Sails shall be measured and stamped by an approved measurer before arrival at the event.
- 8.4. In accordance with rule G3, a boat chartered or loaned for this event may carry national letters or a sail number in contravention of the Class Rules.
- 8.5. During the regatta checks on conformity with class rules, including measurement requirements may be performed at any time
- 8.6. A boat will provide a minimum of 2 people to facilitate measurement.





## 9. SAILING INSTRUCTIONS

- 9.1. The Sailing Instructions will be available at the opening of registration as identified in section 7.1.
- 9.2. They will be posted on the event web site at [www.melges24worlds2009.com](http://www.melges24worlds2009.com) when available.

## 10. VENUE

- 10.1. Attachment A shows the location of the racing areas.
- 10.2. Attachment B shows the location of the regatta venue and host clubhouse.

## 11. THE COURSES

- 11.1. The course to be sailed will be windward-leeward configuration with fleet racing.
- 11.2. Spreader/offset marks and leeward gates will be used.

## 12. PENALTY SYSTEM

- 12.1. Rule 44.1 is changed so that the Two-Turns Penalty is replaced by the One-Turn Penalty.
- 12.2. Rule Appendix P - Special Procedures for Rule 42 shall apply.
- 12.3. Decisions of the jury will be final as provided in rule 70.5.

## 13. SCORING

- 13.1. Five (5) races are required to be completed to constitute a series.
- 13.2. Discards
  - 13.2.1. When fewer than six races have been completed, a boat's series score will be the total of her race scores.
  - 13.2.2. When from six to twelve races have been completed, a boat's series score will be the total of her race scores excluding her worst score.

## 14. SUPPORT BOATS

- 14.1. Support boats shall be identified as decided by the OA.
- 14.2. The IMCA Coach and Support boat policy shall be in operation and is attached as Attachment C.

## 15. LAUNCHING AND BERTHING

- 15.1. Cranage will be available at the following times:

Friday, October 23	1000 – 1700
Saturday, October 24	1000 – 1700
Sunday, October 25	1000 – 1700
- 15.2. Cranage outside these hours will be subject to additional charge.
- 15.3. All boats are to be afloat by 1700 hours on Sunday, October 25.
- 15.4. Boats shall be kept in their assigned spaces the harbour. Fenders and mooring lines will be required.
- 15.5. Bow numbers will establish the priority or order of berthing assignments, haul out order, and other items at the discretion of the OA.

## 16. HAUL-OUT RESTRICTIONS

Boats shall not be hauled out during the regatta except with and according to the terms of written permission of the race committee.

## 17. DIVING EQUIPMENT AND PLASTIC POOLS

Underwater breathing apparatus (including snorkels) and plastic pools or their equivalent shall not be used around boats between the preparatory signal of the first race and the end of the regatta.

## 18. RADIO COMMUNICATION

- 18.1. Except in an emergency, a boat shall neither make radio transmissions while racing nor receive radio communications not available to all boats. This restriction also applies to mobile telephones.
- 18.2. Race information will be given on VHF Channel 78.





## 19. PRIZES

The prizes will be given as follows:

### 19.1. Single Fleet

	Open Division	Corinthian Division
Daily Prizes	Winner of each individual race	Winner of each individual race
Overall Prizes	Prizes for winning helmsman and each crew member for the top eight boats	Prizes for winning helmsman and each crew member for the top six boats

### 19.2. Split Fleet

	Open Division		Corinthian Division	
Daily Prizes – Qualifying Series	Winner of each individual race on course A	Winner of each individual race on course B	Winner of each individual race on course A	Winner of each individual race on course B
Daily Prizes – Final series	Winner of each individual race in gold fleet	Winner of each individual race in silver fleet	Winner of each individual race in gold fleet	Winner of each individual race in silver fleet
Overall Prizes	Prizes for winning helmsman and each crew member for the top five boats overall/in the gold fleet	Prizes for winning helmsman and each crew member for the top five boats in the silver fleet	Prizes for winning helmsman and each crew member for the top three Corinthian boats overall/in the gold fleet	Prizes for winning helmsman and each crew member for the top three Corinthian boats in the Silver fleet

## 20. DISCLAIMER OF LIABILITY

Competitors participate in the regatta entirely at their own risk. See rule 4 Decision to Race. The OA will not accept any liability for material damage or personal injury or death sustained in conjunction with or prior to, during, or after the event.

## 21. INSURANCE

Each participating boat shall be insured with valid third-party liability insurance with an adequate coverage.

## 22. TELEVISION & PHOTOGRAPHERS' RIGHTS

Competitors give absolute right and permission for video footage or photographs of themselves or their boat to be published in any media for press, editorial or advertising purposes.

## 23. FURTHER INFORMATION AND KEY CONTACTS

23.1. For further information about the 2009 World Championship please contact:

Event Web Site  
[www.melges24worlds2009.com](http://www.melges24worlds2009.com)

REGATTA COORDINATOR  
 Liz Filter  
 Eastport Yacht Club  
[emfilter@verizon.net](mailto:emfilter@verizon.net)

PRINCIPAL RACE OFFICER (PRO)  
 Jeff Borland  
[jborland@systematicsolutns.com](mailto:jborland@systematicsolutns.com)

JURY CHAIRMAN  
 Charlotte Greppe  
[cgrepp@yahoo.ie](mailto:cgrepp@yahoo.ie)

23.2. Social calendar together with tourist information, accommodation availability and other details will be posted on the website when available. Event Web Site  
[www.melges24worlds2009.com](http://www.melges24worlds2009.com)

## 24. US SAILING PRESCRIPTIONS

24.1. Rule 40 - US SAILING prescribes that every boat shall carry life-saving equipment conforming to government regulations that apply in the racing area. See [www.ussailing.org/rules/pfd](http://www.ussailing.org/rules/pfd) for more information.

24.2. Rule 61.4 - US SAILING prescribes that no fees shall be charged for protests or requests for redress.





24.3. Rule 68 – US SAILING prescribes that:

- (a) A boat that retires from a race or accepts a penalty does not, by that action alone, admit liability for damages.
- (b) A protest committee shall find facts and make decisions only in compliance with the rules. No protest committee or US SAILING appeal authority shall adjudicate any claim for damages. Such a claim is subject to the jurisdiction of the courts.
- (c) A basic purpose of the rules is to prevent contact between boats. By participating in an event governed by the rules, a boat agrees that responsibility for damages arising from any breach of the rules shall be based on fault as determined by application of the rules, and that she shall not be governed by the legal doctrine of 'assumption of risk' for monetary damages resulting from contact with other boats.

24.4. Rule 76.1 – US SAILING prescribes that an organizing authority or race committee shall not reject or cancel the entry of a boat or exclude a competitor eligible under the notice of race and sailing instructions for an arbitrary or capricious reason or for reason of race, color, religion, national origin, gender, sexual orientation, or age.

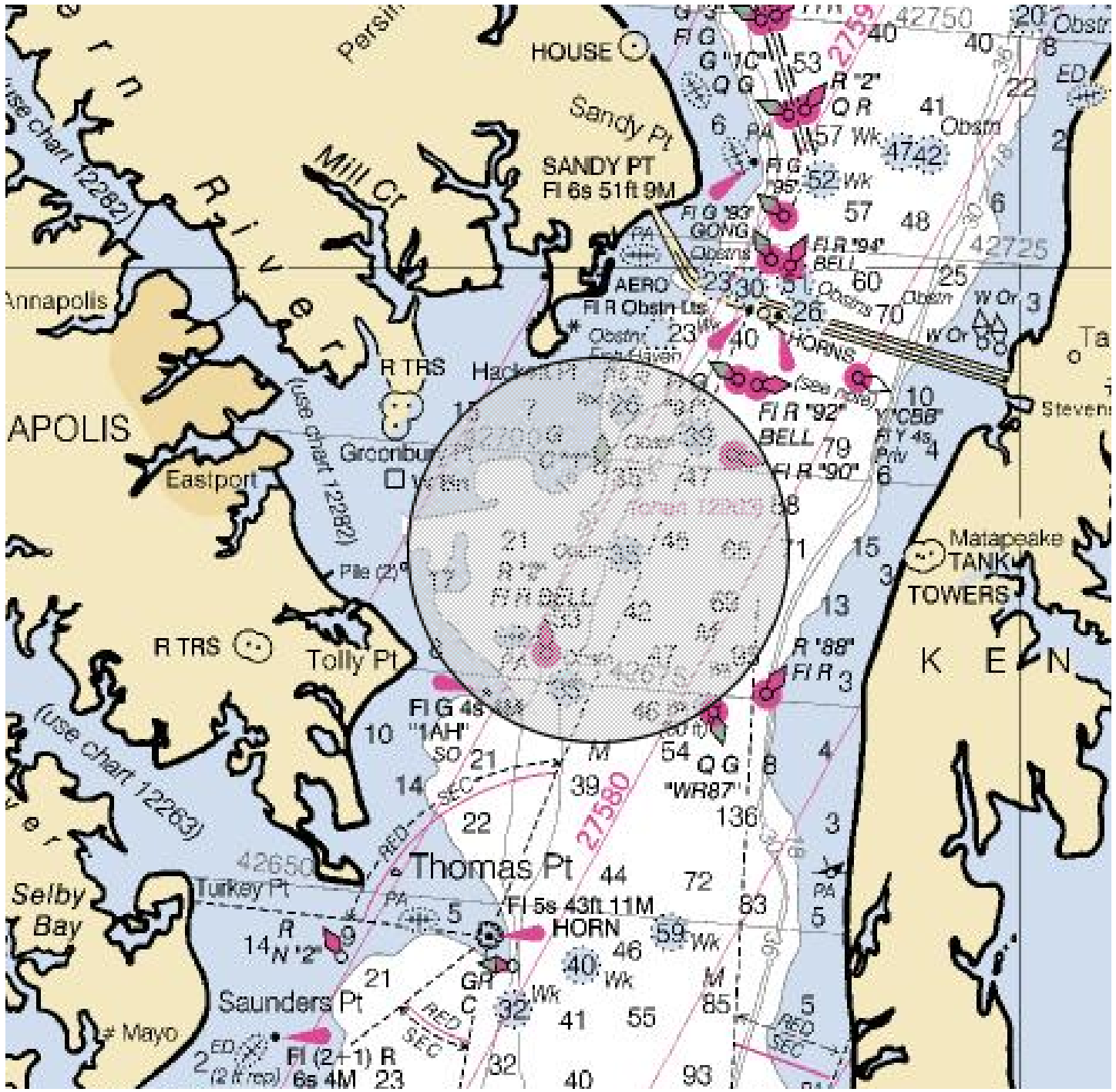
24.5. Rule 88.2 – US SAILING prescribes that sailing instructions shall not change or delete rules 61.4 or 76.3, Appendix F, or its prescriptions to rules 40, 68 or 76.1. However, for an international event the prescription to rule 40 may be deleted.

24.6. Rule 76.3 – US SAILING prescribes that a boat whose entry is rejected or cancelled or a competitor who is excluded from a race or series shall be, upon written request, entitled to a hearing conducted by the protest committee under rules 63.2, 63.3, 63.4 and 63.6.





## Attachment A. RACING AREA





## Attachment B. REGATTA VENUE AND HOST CLUBHOUSE

**ANNAPOLIS SAILING SCHOOL  
7001 BEMBE BEACH ROAD  
ANNAPOLIS, MD 21403**







## Attachment C. IMCA COACH, SUPPORT, SPECTATOR AND PRESS BOAT POLICY

### COACH AND SUPPORT BOATS

1. Coach and supporter boats shall register with the race office during registration. They shall declare which boat or boats they are attached to.
2. Coach and Supporter boats shall keep clear of the racing area at all times during racing.
3. Any Coach or Supporter boat that interferes with another competitor or the racing in any way, including creating excess wash, or hinders an official boat carrying out its duties shall have their race boat or boats liable to a penalty at the discretion of the Jury.
4. The penalty given by the Jury is at their discretion, but shall be applied to the overall score and therefore not discarded.
5. No Coach boat or Support boat shall pass information in any way to a boat that is racing. Rule 41. Infringements of this will be taken very seriously
6. Coach and Support Boats shall communicate only with the boats they are registered to, and only by means of voice between races. Closed VHF or mobile telephone communication is prohibited.
7. Coach and Supporter boats shall display a flag, or other identification symbol, as may be required by the Race Committee.
8. All Melges 24 boats shall proceed to the Racing area under their own power.
9. There shall be no transfer of any goods or equipment from leaving the dock until after the finish of the last race of the day between Melges 24's and their coach or support boats.
10. Coach and support boats shall not go alongside their Melges 24's until after the finish of the last race of the day.
11. Any competitor may protest under this attachment.

### PRESS AND SPECTATOR BOATS

1. All Press and Official Spectator boats shall be registered with the Race Organisers during Registration.
2. Press and Spectator boats shall not interfere with the racing in anyway and shall stay at a distance outside the racecourse where their wake causes no problem.
3. The organisers may appoint one or more photo boats, which will be allowed within the race course. The position of these boats shall not be grounds for redress.
4. Press and Spectator boats shall display any flag, or other identification symbol as may be required by the race committee.

